

Highrise One, Munich



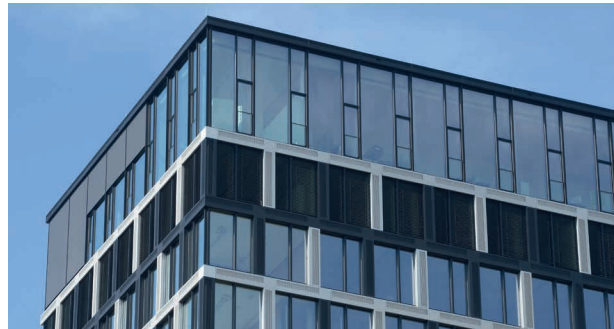
Highrise One, Munich

Enjoy the Building, Enjoy the Space

The Highrise One office tower is located directly behind the Ostbahnhof in Rosenheimer Straße. The project consists of a five-floor podium building and a stretched tower of 17 levels. "HIGHRISE one" gives Munich's silhouette a special character with its height of 65 meters and a façade that provides openness and transparency.

The building complex was completed in 2017. It was erected on a plot of approx. 3,700 m² and offers about 18,935 m² rental space and a three-level underground carpark with 195 individual parking spaces. The building was designed in accordance to sustainability criteria and aims at achieving Deutsche Gesellschaft für nachhaltiges Bauen - DGNB silver certification (German Sustainability Council).

The office building was created with a particular structural lightness, emphasised by the open and transparent unitised façade realised by Dobler Metallbau.



Tower top with double height units

Client/Employer/Site Supervision:

HOCHTIEF AG

Planning Architect:

steidle architekten

Façade Consultant:

DS-Plan GmbH

Installation Time:

09/2016 - 06/2017

Extent of Work:

Design, production, delivery and installation of the façade types and constructions mentioned below.

Façade Area & Quantity:

7,100 m² unitised façade

1,000 m² punched windows incl. surrounding thermal insulation composite system (WDVS)

1,000 m² punched windows incl. surrounding metal cladding façade

750 m² stick system incl. punched windows

Glass:

Glass build up: 8 mm float / 14 mm cavity / 4 mm float / 14 mm cavity / laminated float 44.2

L_T-value: ≥ 72 %

Solarfactor (g-value): ≤ 50 %

U_g-value: ≤ 0,6 W/(m²K)

Solar control coating: Zero-Schicht 1.0

Surfaces:

Anodised E6, colour ref. C31 and C34

Polyester powder coating (PPC), colour: Tiger Code 029/65650

Façade Handover:

2017



Tower podium building interface