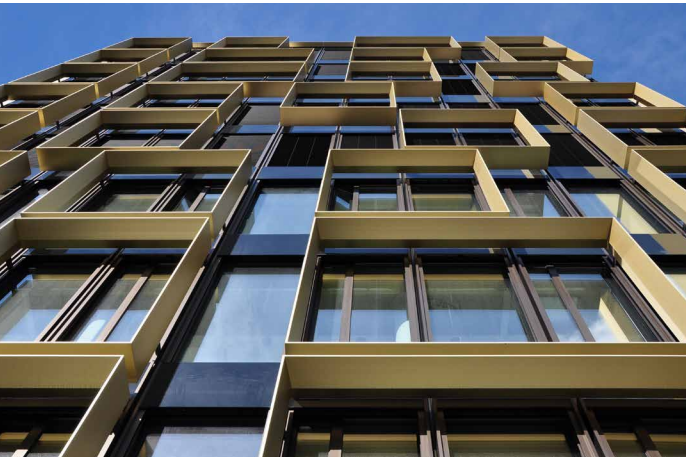


Nove, Munich





Impression of the façade with gold coloured feature frames

Architectural Highlight

The office ensemble "NOVE" by Citterio was developed in the new Munich residential and commercial district Arnulfpark between Hackerbrücke and Donnersbergbrücke. The project name Nove is Italian for "nine", referring to the site's designation "MK 9 south" in the zoning plan. The NOVE was designed as a so-called Green Building. It has six regular floors and a 23 m high atrium, as well as a nine-floor wing at Luise-Ullrich-Straße and achieved a LEED (Leadership in Energy & Environmental Design) Platinum certification.

The building offers 27,500 m² office space above ground for more than 1,300 employees. In addition there are more than 430 underground car parking spaces across three levels. Space for stylish catering for the public on the ground floor is part of the concept.

The building characterized by gold bronze coloured aluminum frames arranged in front of the actual façade, which give the façade a striking, three-dimensional structure and elaborate illumination at night. The aim was to elevate the quality of the office space to a higher level new to Munich - this is reflected in the façade built by Dobler Metallbau.

Client/Employer:

Horus Development der SALVIS Consulting und Art-Invest

Planning Architect/Site Supervision:

Citterio Patricia Viel and Partners, Mailand

Façade Consultant:

DS-Plan

Installation Time:

09/2015 - 12/2016

Extent of Work:

Design, production, delivery and installation of the façade types and constructions mentioned below.

Façade Area & Quantity:

13,000 m² unitised façade

1,400 m² atrium façade

700 m² internal façade at atrium area as unitised façade

300 m² stick-system façade, canopies and doors

Glass:

Glass build up: 6 mm toughened / 14 mm cavity / 6 mm float / 16 mm cavity / laminated float 55.2

L_T-value: ≥ 60 %

Solarfactor (g-value): ≤ 40 %

U_g-value: ≤ 0,7 W/(m²K)

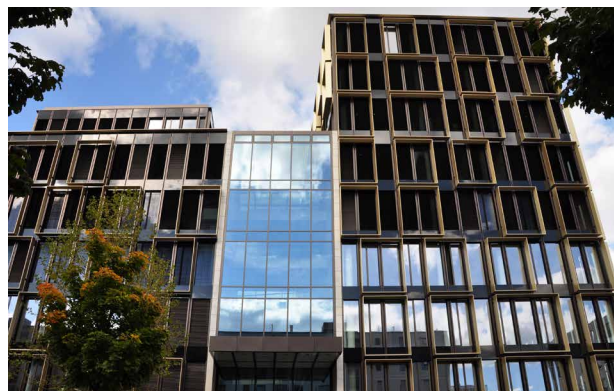
Surfaces:

Façade: High durable (HWF) special colour to mock C34 (Tiger code 68/60306)

Frames: Special anodised, colour gold bronze

Façade Handover:

04/2017



South view with low-rise building, atrium and high-rise building