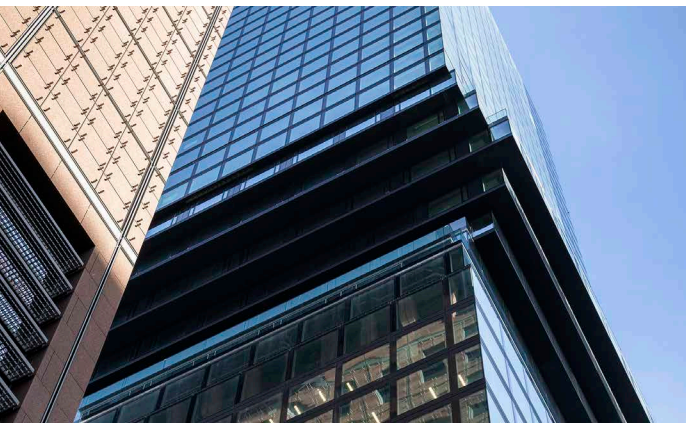


OMNITURM, Frankfurt/Main



OMNITURM, Frankfurt/Main



*Transition between the façades of
Lowrise Office - Residential - Highrise Office*

A new tower for the financial district of Frankfurt...

The OMNITURM is an innovative high-rise building in the very centre of the Frankfurt financial district. The building with its highly transparent glass façade and a column free floor plan has a height of about 185 metres. It is the first high-rise mixed-use building in Germany, housing office, living and public spaces at the same time. This mix is also to be seen in the tower's architecture, where the first three of a total of 45 storeys are public space, followed by offices the levels above until in the lower third of the building behind the bended façade section, called "Hüftschwung" with the balconies the residential part is allocated. Further office storeys are crowning this architectural accent. The building set-up offers flexible and efficient spaces with the newest technical functionalities that fulfil all demands of modern and international companies as well as sophisticated urban tenants in every respect. The façade of Dobler Metallbau received Platinum certificate, the highest degree of the Green Building Standard LEED. The size of the pre-manufactured elements and the installation of the façade elements beneath the cantilevering balconies was a huge challenge for our installation team, which was successfully mastered in Dobler style.

Dobler Metallbau is proud of the innovative and patented vertical moving pop-in shutter, which is used as vent in the office façades. Those vents are included into the mullion of the unitised elements and nearly invisible from the outside. On demand, the pop-in shutter can also be furnished with actuators for more comfort.

Employer:

Project Company of Tishman Speyer

Site Supervision:

FCM, Frankfurt/Main

Planning Architect:

BIG – Bjarke Ingels Group, Copenhagen

B&V Braun Canton Architekten, Frankfurt

Façade Consultant:

a..t.f - architektur technik fassade, Frankfurt/Main

Installation Time:

2018 - 2019

Extent of Work:

Design, production, delivery and installation of the façade types and constructions mentioned below.

Façade Area & Quantity:

20,000 m ²	office façades - Highrise + Lowrise
5,600 m ²	residential façades (Levels 15 - 22)
3,200 m ²	sundry stick systems on podium area
2,000 m ²	sundry rain screen and soffit claddings
2,900 m ²	various façades (plant housing, parapets, roof construction and doors)

Glass:

Office façade: Double-glazed Insulation glass,

Coating: Cool-Lite XTREME 70/33

Residential façade: Triple-glazed Insulation glass,

Coating: Stopray Vision 50

Surfaces:

Anodised, E6/C35, E5/C35 (grinded and polished)

Façade Handover: 2019/20



Great view of the façade